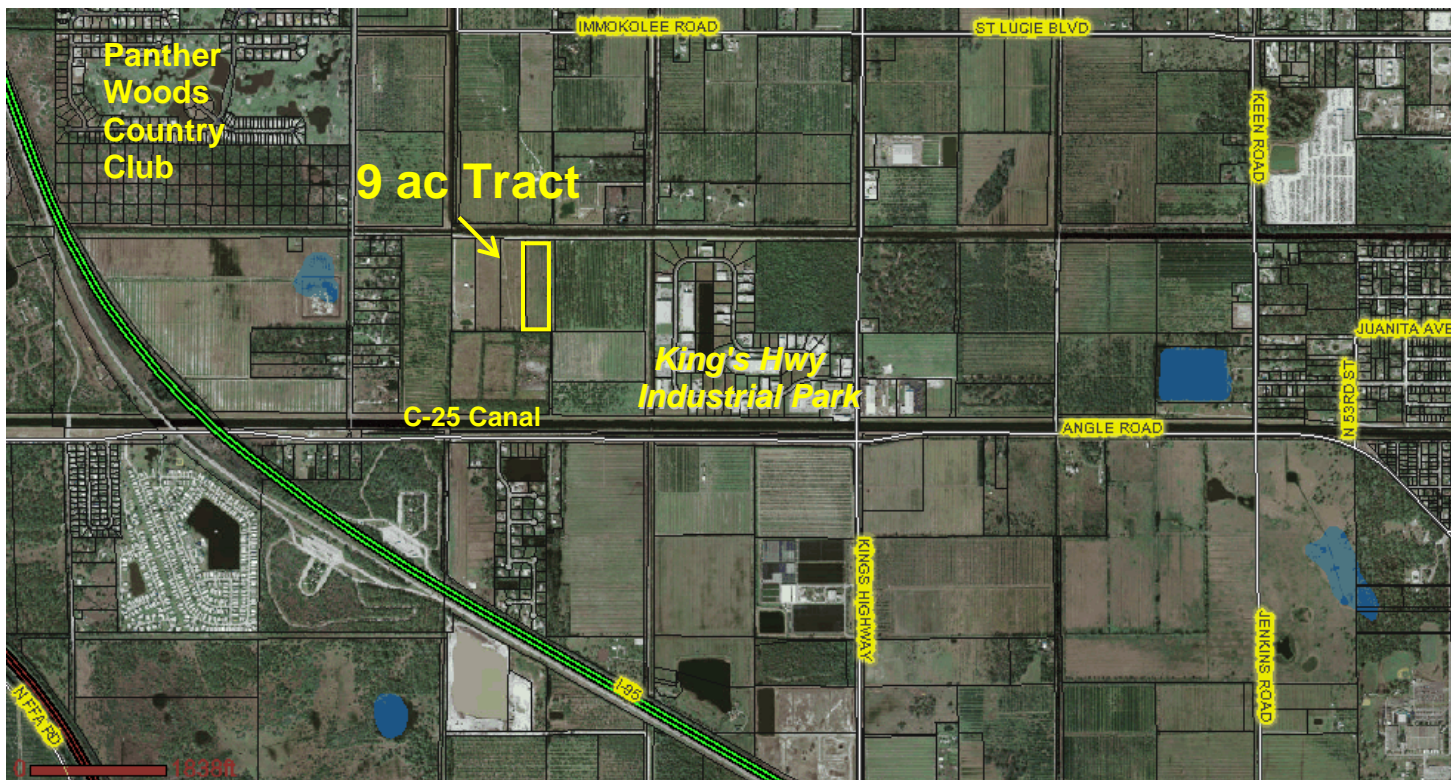
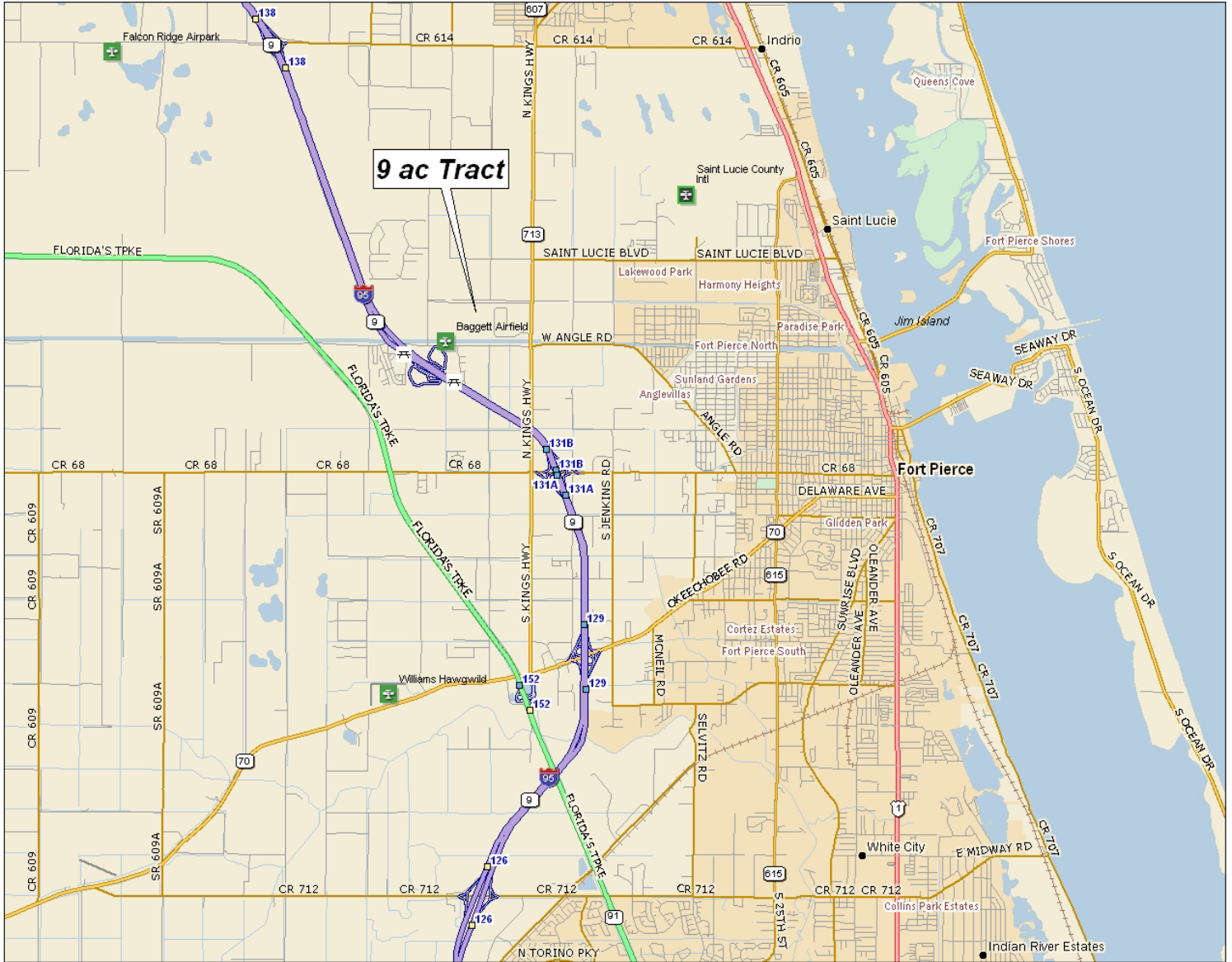


9 acre Fenced Pasture – East of I-95
Fort Pierce, Saint Lucie County, Florida
\$275,000



- Approximately 318 ft. x 1230 ft.
- Zoning: AG-1, 1 dwelling unit per acre
- 3 / 4 mile west of Kings Hwy.
- Access via County Maintained Right-of-Way along L-20 Canal Road
- Taxes – Agriculture-Exempt for cattle grazing
- Two miles from I-95 Exit #131 at SR-68 Orange Ave. West



Directions to Site:

From I-95: Exit at #131 Orange Ave West to King's Hwy traffic light; turn right and go North 2 miles to L-20 Road, then left & West ¾ mile to site. Watch for the signs.